



2023 Calendar

DATABASE EDITION



PASADENA PUBLIC LIBRARY

CENTRAL LIBRARY • 713.477.0276 • 1201 Jeff Ginn Memorial Dr.

FAIRMONT BRANCH • 281.998.1095 • 4330 Fairmont Pkwy.



Disponible en Español



FIND IT IN LIBBY



**SCAN
ME!**



**SCAN
ME!**



There is something for everyone!

January

LET YOUR CREATIVE SIDE EMERGE! (IT'S INTERNATIONAL CREATIVITY MONTH)

CALLING ALL CREATIVES! THIS MONTH WE ARE FEATURING CRAFTSY, ALSO AVAILABLE IN SPANISH.

Craftsy is the perfect online resource to get the new year started! It's ideal for all creative makers from basic instruction to advanced techniques for over 1,300 courses in fabric and yarn crafts, baking, drawing, photography and much more. Craftsy is available through Libby, 24/7. Simply download the free app, add our library, and look for "Extras" to get started; or go to <http://libbyapp.com/library/hadc>, in your browser.

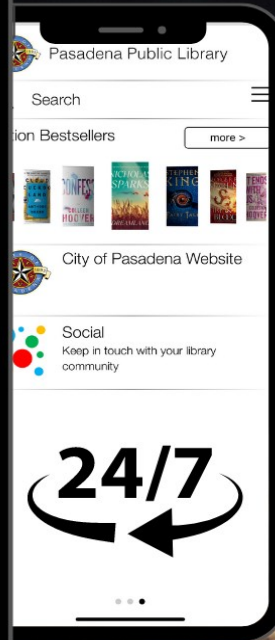
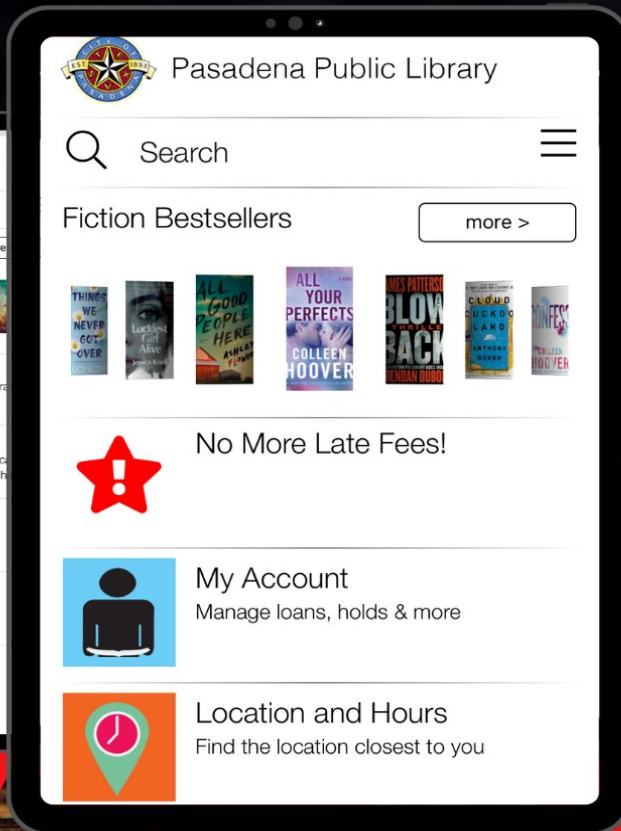
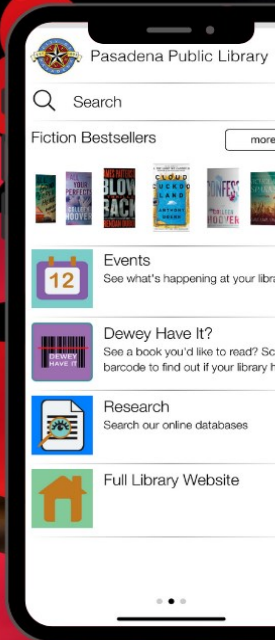
SUN	MON	TUE	WED	THU	FRI	SAT
1 New Year's Day	2 New Year's Day Observed LIBRARY CLOSED	3	4	5	6	7
8	9	10	11	12	13	14
15	16 Martin Luther King, Jr. Day LIBRARY CLOSED	17	18	19	20	21
22 Lunar New Year	23	24	25	26	27	28
29	30	31				



PASADENA PUBLIC LIBRARY APP

Library resources at your fingertips!

↓ DOWNLOAD



SCAN ME!



SCAN ME!



SCAN ME



February

ISBN THINKIN' 'BOUT U! (IT'S NATIONAL LIBRARY LOVERS' MONTH)

LIBRARY ON THE GO! THIS MONTH WE ARE FEATURING THE LIBRARY APP AND NICHE ACADEMY.

Library App: Access your library account, locations, hours, events, digital collection, databases, and so much more!

Niche Academy: In Niche Academy, you can find tutorials for many different library resources. Browse the entire catalog of tutorials or look for resource-specific links throughout the library website.

SUN	MON	TUE	WED	THU	FRI	SAT
			1	2 <small>AARP Tax-Aide Begins Groundhog Day</small>	3	4 <small>Take Your Child To The Library Day</small>
5	6	7	8	9	10	11
12 <small>Super Bowl LVII</small>	13	14 <small>Valentine's Day</small>	15	16	17	18
19	20 <small>Presidents Day</small>	21	22	23	24	25
26	27	28				

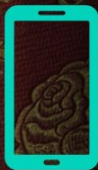


Read anywhere, anytime!

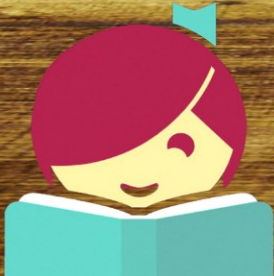
axis360
digital media library
by Baker & Taylor



SCAN
ME



SCAN
ME



SCAN
ME



SCAN
ME



March

BOOK LOVERS UNITE & SPRING INTO DOWNLOADABLE READS! (IT'S READ AN EBOOK MONTH)

READ ANYTIME, ANYWHERE FOR FREE! THIS MONTH WE ARE FEATURING AXIS 360 AND LIBBY.

Axis 360: Pasadena Library's private collection of eBooks and eAudiobooks reserved strictly for Pasadena Library card holders. Simply download the app on your devices, enter your library card number, and start browsing!

Libby: A collection of eBooks, eAudiobooks, and magazines shared by libraries in the Houston area. Make sure to log into your account to see everything available.

SUN	MON	TUE	WED	THU	FRI	SAT
			1	2	3	4
				Read Across America Day		
5	6	7	8	9	10	11
12	13	14	15	16	17	18
Daylight Saving Time Begins					St. Patrick's Day	Library Carnival
19	20	21	22	23	24	25
	Spring Begins					
26	27	28	29	30	31	



A great opportunity to assess your finances!



GALE BUSINESS

ENTREPRENEURSHIP



April

"IT'S NOT ABOUT HAVING LOTS OF MONEY. IT'S KNOWING HOW TO MANAGE IT." (IT'S NATIONAL FINANCIAL LITERACY MONTH)

GET FINANCIALLY SAVVY! THIS MONTH WE ARE FEATURING WEISS FINACIAL & GALE BUSINESS: ENTREPRENEURSHIP.

Weiss Financial: Important tool for investing, choosing a Medicare supplement plan, and for financial literacy from Weiss Ratings & Grey House Publishing.

Gale Business: Entrepreneurship: Learn how to start, finance, or manage your small business. Includes sample business plans, how-to guides, articles, and more.

SUN	MON	TUE	WED	THU	FRI	SAT
						1 April Fool's Day
2	3	4	5	6	7	8 Good Friday Observed LIBRARY CLOSED
9 Easter Sunday	10	11	12 Drop Everything And Read Day	13	14 AARP Tax-Aide Ends	15
16 Smart Money Week	17	18 Tax Day Central Library's 61 Year Anniversary	19	20	21 San Jacinto Day LIBRARY CLOSED	22
23 National Library Week 30 Pasadena Public Library Day	24	25	26 Library Outreach Day	27	28	29 Día Del Niño/Día Del Libro



Guides to the best new and current books!



**BOOKS AND
AUTHORS**



BookBrowse
for Libraries

NextReads
Find *your* next read



**SCAN
ME**



**SCAN
ME**



**SCAN
ME**



May

GET COZY WITH A FAVORITE OR NEW BOOK & GET CAUGHT READING! (IT'S GET CAUGHT READING MONTH)

ANSWER THE AGE-OLD QUESTION, "WHAT DO I READ NEXT?" THIS MONTH WE ARE FEATURING BOOKBROWSE, NEXTREADS NEWSLETTERS, AND GALE BOOKS & AUTHORS.

BookBrowse: Reviews, recommendations, read-alikes, books by theme, author bios and interviews, resources for book clubs, and more. Access from anywhere using your library card number.

NextReads Newsletters: Curated reading recommendations delivered directly to your inbox!

Gale Books & Authors: Search and match reading interests to books, authors, genres, or topics.

SUN	MON	TUE	WED	THU	FRI	SAT
	1	2 <small>Children's Picture Book Day</small>	3	4 <small>Star Wars Day</small>	5	6 <small>Free Comic Book Day</small>
7	8	9	10	11	12	13
14 <small>Mother's Day</small>	15	16	17	18	19	20
21	22	23	24	25	26	27
28	29 <small>Memorial Day LIBRARY CLOSED</small>	30	31			



All Together Now



beanstack



**SCAN
ME** 



**SCAN
ME** 

20230100 Artwork by Frank Morrison



collaborative
summer library program™

June

CALLING READERS OF ALL AGES, SUMMER READING FUN HAS BEGUN!

THIS YEAR'S SRP THEME IS "ALL TOGETHER NOW" KINDNESS/FRIENDSHIP/UNITY. THIS MONTH WE ARE FEATURING BEANSTACK.

Beanstack: a web-based reading challenge software! You can track your reading minutes, write book reviews, and participate in fun activities all summer long!

Summer Reading starts June 1st and ends July 31st, 2023. Register through the Beanstack app, online, or in person. Complete activities and earn points for a chance to win awesome prizes!

SUN	MON	TUE	WED	THU	FRI	SAT
				1	2	3
				Summer Reading Begins		
4	5	6	7	8	9	10
11	12	13	14	15	16	17
			Flag Day			
18	19	20	21	22	23	24
Father's Day	Juneteenth		Summer Begins			
25	26	27	28	29	30	

Discover your family history!



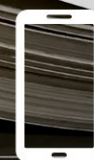
**SCAN
ME**



**SCAN
ME**



**SCAN
ME**



July

"LIKE BRANCHES ON A TREE, WE ALL GROW IN DIFFERENT DIRECTIONS YET OUR ROOTS REMAIN AS ONE." — SUZY KASSEM (IT'S NATIONAL FAMILY REUNION MONTH)

THIS MONTH WE ARE FEATURING HERITAGE QUEST, FOLD3, AND PROQUEST AFRICAN AMERICAN HERITAGE.

Heritage Quest: Provides U. S. Federal census records and a collection of research materials for tracing family lineages.

Fold3 Library Edition: Provides access to a growing collection of US military records, stories, photos, and personal documents.

ProQuest African American Heritage: A groundbreaking new digital resource exclusively devoted to African American family history research.

SUN	MON	TUE	WED	THU	FRI	SAT
						1
2	3	4 Independence Day LIBRARY CLOSED	5	6	7	8
9	10	11	12	13	14	15
16	17	18	19	20	21	22
23 30	24 31 Summer Reading Ends	25	26	27	28	29

*Skill-building resources for classroom
and homework success.*

EBSCO
LearningExpress®



**SCAN
ME** 

 GALE IN CONTEXT

ELEMENTARY



**SCAN
ME** 



August

"LET US REMEMBER: ONE BOOK, ONE PEN, ONE CHILD AND ONE TEACHER CAN CHANGE THE WORLD." - MALALA YOUSAFZAI
(IT'S BACK-TO-SCHOOL MONTH!)

GET READY FOR SCHOOL! THIS MONTH WE ARE FEATURING LEARNING EXPRESS AND GALE IN CONTEXT: ELEMENTARY.

Learning Express: Test preparation materials and interactive practice exams in the areas of academic, civil service, military, and professional licensing and certification exams.

Gale In Context: Elementary: Introduce elementary students to database searching with resources featuring age-appropriate, curriculum-related content.

SUN	MON	TUE	WED	THU	FRI	SAT
		1	2	3	4	5
6	7	8	9 Book Lovers Day	10	11	12
13	14	15	16 Tell A Joke Day	17	18	19
20	21	22	23	24	25	26
27	28	29	30	31		



LIBRARY CARDS

Library cards are available to all residents of Texas free of charge. Customers will need to show photo identification and proof of current residential address. Customers are financially responsible for items checked out on their accounts.



LOAN PERIODS

ITEM	LIMIT	CHECK-OUT
Books	30	2 Weeks
New Books	30	2 Weeks
Blu-ray/DVDs	10	2 Weeks
Playaways	10	2 Weeks
Magazines	5	2 Weeks



RENEWALS

All physical items have a loan period of two weeks and five renewals are allowed. Automatic renewals will take place three days before due date as long as there are no holds on the items.



FINES | LOST & DAMAGED ITEMS

Overdue fines are NO LONGER applied to accounts. All items will be assumed lost after 30 days.

You are still responsible for lost and damaged items. We will accept new or like new replacement copies of library items instead of payment.



The Place To Be!



**SCAN
ME**

September

THE MOST POWERFUL TOOL IN YOUR WALLET! (IT'S LIBRARY CARD SIGN-UP MONTH)

YOUR PASADENA LIBRARY CARD GIVES YOU ACCESS TO MORE THAN JUST FREE BOOKS!

Pasadena Library Card Perks: Print Collection, Computer & Internet Use, DVDs & Blu-Rays, eBooks & eAudiobooks, Digital Magazines, Databases & much more! Plus, we no longer charge overdue fees!

Library cards are available to all residents of Texas FREE of charge. Customers will need to show photo identification and proof of current residential address.

SUN	MON	TUE	WED	THU	FRI	SAT
					1	2
3	4 <small>Labor Day LIBRARY CLOSED</small>	5	6 <small>Read A Book Day</small>	7	8	9
10 <small>Grandparents Day</small>	11 <small>Patriot Day 9/11</small>	12	13	14 <small>Fairmont Library's 31 Year Anniversary</small>	15	16
17	18	19	20	21	22	23 <small>Autumn Begins</small>
24	25	26	27	28	29	30

PLS JUDGES WORTHY
BY DWT B R F CAY
CAY
4871 2676813
Ruedel g m 24v h 90 30096

Useful, trustworthy information and resources
on a range of topics!



 **GALE**

HEALTH AND WELLNESS



 **GALE ONEFILE**

HEALTH AND MEDICINE



 **MedlinePlus**[®]
Trusted Health Information for You

 **SCAN ME**  **SCAN ME**  **SCAN ME** 

October

A TIME TO RECOGNIZE THE IMPORTANCE OF MAKING HEALTH INFORMATION EASY TO UNDERSTAND! (IT'S HEALTH LITERACY MONTH)

THIS MONTH WE ARE FEATURING GALE: HEALTH & WELLNESS, GALE ONEFILE: HEALTH & MEDICINE, AND MEDLINE PLUS.

Gale Health & Wellness: Full range of health-related issues, from current disease and disorder information to alternative medical practices.

Gale OneFile: Health & Medicine: Up-to-date information on a range of health care topics. Best for students, researchers, and health care professionals.

Medline Plus: An online health information resource for patients and their families and friends, with a mission to present high-quality, relevant health and wellness information. Brought to you by the National Library of Medicine.

SUN	MON	TUE	WED	THU	FRI	SAT
1 Banned Books Week	2	3	4	5	6	7
8 Teen Read Week	9 Columbus Day Indigenous Peoples' Day	10	11	12	13	14
15 Friends of the Library Week	16	17	18	19	20	21
22	23	24	25	26	27	28
29	30	31 Halloween				

GALE PRESENTS

udemy



SCAN
ME 

GALE ONEFILE

VOCATIONS
AND CAREERS



SCAN
ME 

GALE ONEFILE

LEADERSHIP AND
MANAGEMENT



SCAN
ME 

A to Z
• d a t a b a s e s •

FREE:
Job Search
Business/People Profiles
Mailing Lists & Sales Leads
Email Service
Background/Criminal Search



SCAN
ME 



GRADcafé
by Project GRAD

It's never too late to start!



SCAN
ME 

"YOU ARE NEVER TOO OLD TO SET ANOTHER GOAL OR TO DREAM A NEW DREAM." - C.S. LEWIS (IT'S NATIONAL CAREER DEVELOPMENT MONTH)

THIS MONTH WE ARE FEATURING DATABASES THAT WILL HELP YOU WITH YOUR CAREER DEVELOPMENT JOURNEY.

Gale Presents: Udemy: Learn and improve skills across business, tech, design, and more. Includes 10,000+ on-demand video courses in multiple languages.

Gale OneFile: Vocations & Careers: Research a vocation, find an appropriate learning institution, and get assistance on job searches and maintaining a career.

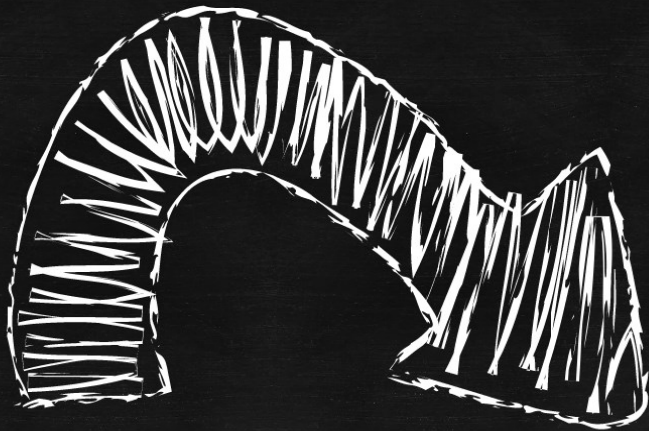
Gale OneFile: Leadership & Management: Search authoritative periodical content covering topics like organizational dynamics.

AtoZ Databases: The premier job search, reference, and mailing list database.

November

SUN	MON	TUE	WED	THU	FRI	SAT
			1	2	3	4 Ichigo-Con V.8 Book Lovers Day
5 Daylight Saving Time Ends	6	7 Hanukkah Begins	8 STEM/STEAM Day	9	10 Veterans Day Observed LIBRARY CLOSED	11 Veterans Day
12 Diwali	13 Young Readers Day	14	15 I Love To Write Day	16	17	18
19	20	21	22	23 Thanksgiving Day LIBRARY CLOSED	24 Thanksgiving Observed LIBRARY CLOSED	25 Thanksgiving Observed LIBRARY CLOSED
26	27	28	29	30		

*Radically better language learning.
in one complete experience.*




Transparent
Language®
Online



December

"LANGUAGE IS THE ROAD MAP OF A CULTURE. IT TELLS YOU WHERE ITS PEOPLE COME FROM AND WHERE THEY ARE GOING."
- RITA MAE BROWN (IT'S NATIONAL LEARN A FOREIGN LANGUAGE MONTH)

LEARNING ANOTHER LANGUAGE COMES WITH A WEALTH OF BENEFITS! THIS MONTH WE ARE FEATURING TRANSPARENT LANGUAGE ONLINE!

Transparent Language Online: Unlimited access to over 100 online language courses, packed with pronunciation, speech, grammar, writing, and vocabulary-building lessons. Learners are able to write or speak the answers, practice pronunciation by slowing down on-screen examples, and converse with native speakers through interactive videos.

SUN	MON	TUE	WED	THU	FRI	SAT
					1	2 <i>Photos With Santa</i>
3	4	5 <i>International Volunteer Day</i>	6	7 <i>Hanukkah Begins</i>	8	9
10	11	12	13	14	15	16
17	18	19	20	21 <i>Short Story Day Winter Begins</i>	22 <i>Christmas Observed LIBRARY CLOSED</i>	23 <i>Christmas Observed LIBRARY CLOSED</i>
24 <i>Christmas Eve</i> 31 <i>New Year's Eve</i>	25 <i>Christmas Day LIBRARY CLOSED</i>	26	27	28	29	30



Want to know more about the Pasadena Public Library?
Visit www.pasadenalibrary.org



CENTRAL LIBRARY



1201 Jeff Ginn Memorial Dr.
Pasadena, TX 77506 | 713.477.0276

LIBRARY HOURS



MONDAY - THURSDAY | 10AM - 8PM
FRIDAY - SATURDAY | 10AM - 5PM
SUNDAY | CLOSED

FAIRMONT LIBRARY



4330 Fairmont Parkway
Pasadena, TX 77504 | 281.998.1095

LIBRARY WEBSITE

Browse new titles, resources, library events, and more!



www.pasadenalibrary.org



SCAN
ME

SOCIAL MEDIA

Follow us on social media for our latest news, updates and events!



@pasadenatxpubliclibrary



SCAN
ME



@pasadenapubliclibrary



SCAN
ME

explore . learn . create . connect



PASADENA PUBLIC LIBRARY

CENTRAL LIBRARY • 713.477.0276 • 1201 Jeff Ginn Memorial Dr. | FAIRMONT BRANCH • 281.998.1095 • 4330 Fairmont Pkwy.